



# Healthcare Enhancement & Awareness for Life

Transforming Women's Health in  
Rural Maharashtra



Targeting  
**11,300**  
Women



Raising  
**4.28 Crores**

via ZCZP  
Instruments



[www.saidhamhospital.com](http://www.saidhamhospital.com)

# Initiative Overview



## Project Name

**HEAL – Healthcare Enhancement  
and Awareness for Life**



## Project Duration

**12 months**



## Issuer

**Dr. Mane Medical Foundation and  
Research Centre (DMMFRC)**



## Geographic Focus

**Rahuri, Ahmadnagar District,  
Maharashtra**



## Listing Platform

**BSE Social Stock Exchange**



## Primary Objective

**Screen 11,300 women for early  
detection of cervical cancer**



## Fundraising Target

**₹4.28 Crore**



## Core Mission Statement

**Early detection. Faster treatment.  
Lasting hope.**

# The Problem & Our Solution

## Current Healthcare Crisis in Rahuri

### Doctor-to-Population Ratio



1 doctor per 5,000 people  
(vs. national avg: 1:1,700)

### Cervical Cancer Incidence



18.3% locally – largely preventable with screening

### Nearest Tertiary Care Centre



50+ km away – delays diagnosis and increases mortality

### Economic Barriers



Low district per-capita GDP – communities cannot afford diagnostics

## Our Five-Step Delivery Model

### 1. Awareness



Community education sessions, myth-busting, leader engagement

### 2. Screening



113 mobile & village camps across 20 villages

### 3. Diagnosis



On-site PAP tests, colposcopy, biopsy with rapid referral

### 4. Treatment



Surgical interventions at Saidham Cancer Hospital (5 endoscopic cameras)

### 5. Follow-up



Long-term patient tracking and quarterly outcome measurement

# Institutional Strength & Impact Track Record

## Why Trust DMMFRC?

### Years of Operation



Since 2011  
(14+ years of clinical delivery)

### Cancer Surgeries Conducted



16,000+  
procedures completed

### Communities Reached



1,000,000+  
through health programs

### Leadership



Dr. Swapnil M. Mane  
– Gynecologic Oncologist

### Partner Hospital



Saidham Cancer Hospital (equipped with advanced endoscopic technology)

## Governance & Oversight



Independent Ethics Committee review



Quarterly review board meetings



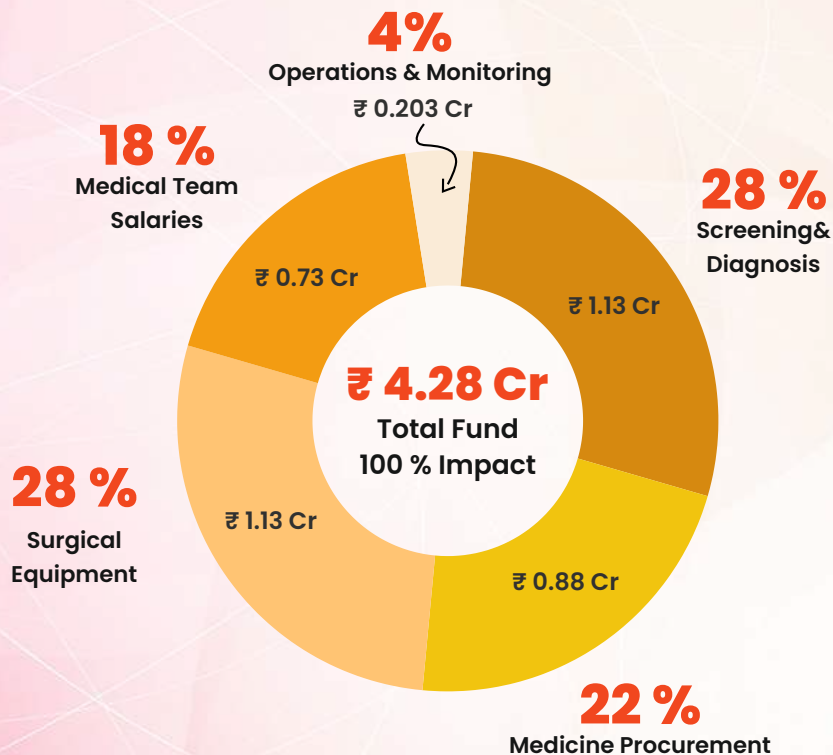
External evaluation consultant engaged



SEBI ICDR-compliant offering with segregated escrow account management

# Budget & Expected Outcomes

## Fund Utilization (₹4.28 Crore)



## Expected 12-Month Impact



**11,300**

Women Screened



**1,100+**

Early-Stage Cancers  
Detected & Treated



**800+**

Surgical Procedures



**200+**

Healthcare Workers Trained



**22000**

Medicine Beneficiaries

# Why Invest in HEAL?

## Social Return Profile



Measurable, verifiable impact: Every rupee prevents cancer deaths



1,100+ early-stage cancer diagnoses with treatment in Year 1



Sustainable health infrastructure for 11,300+ women

## Regulatory & Compliance Benefits



SEBI oversight and regulated offering



80G eligibility for individual donors

## Investment Instrument

**Instrument Type:** Zero Coupon Zero Principal (ZCZP) Social Impact Bond focused on measurable social outcomes rather than financial returns.



Minimum Investment: **₹1,000**



Listing Platform: **BSE Social Stock Exchange**



No Maximum Limit: **Invest as per individual capacity and mandate**



Eligible Investors: Indian Category I–IV investors (**banks, financial institutions, insurance companies, registered companies, trusts, HNIs, retail investors**)

# How to Invest – Process & Checklist

## Pre-Investment Requirements



**Confirm your eligibility**  
(Category I–IV investor)



**Maintain active Demat**  
**Account and valid PAN**



**Ensure sufficient funds or**  
**ASBA authorization**

## Application & Allocation (4 Simple Steps)

1



### Complete Application

Submit online or physical application with Demat DP ID, PAN, bank details, and investment amount

2



### Make Payment

Transfer funds via ASBA, UPI, or cheque

3



### Receive Allotment

ZCZP units credited to your Demat account within 8–10 working days

4



### Monitor Impact

Receive quarterly impact and utilization reports to your registered email

## Critical Do's & Don'ts

### Do's

- ✓ Use your own UPI/ASBA account
- ✓ Verify DP ID, PAN, bank details
- ✓ Keep funds available or ASBA active
- ✓ Retain all confirmations and receipts
- ✓ Monitor quarterly reports and dashboards

### Don'ts

- ✗ Apply below minimum (₹1,000)
- ✗ Use third-party or joint accounts
- ✗ Submit incomplete or mismatching details
- ✗ Ignore verification emails or calls
- ✗ Invest beyond your risk appetite





## Invest in Lives. Invest in Hope.

Every rupee screened. Every woman saved changes generations tomorrow.

**Investment Status: Now Open on BSE Social Stock Exchange**



Minimum Investment  
**₹1,000**



Target Raise  
**₹ 4.28 Crore**



Project Focus  
**11,300** women in Rahuri, Ahmadnagar District



Duration  
**12 Months**

### Project Leadership & Contact

**Dr. Swapnil M. Mane | Project Director, DMMFRC**

**Email:** connect@dmmfrc.com | **Phone:** +91 74981 36701

**Website:** www.saidhamhospital.com

**DFRD:** Available at BSE Social Stock Exchange portal

([https://www.bsesocialstockexchange.com/downloads/DFRD\\_DMMFRC.pdf](https://www.bsesocialstockexchange.com/downloads/DFRD_DMMFRC.pdf))

